



GHI - BELGRAVE COURT

**The completion** of Belgrave Court for GHI was a satisfying project for **haa design**, not just because it was pleasing to help a client with whom **haa design** has developed a long standing relationship, but because the project represented the coming together of various skills as part of **haa design's** longer term strategy: research, or at least an understanding of design issues at a theoretical level, leading on to design of buildings and the fitting out of interiors which are informed by this research. It is pleasing therefore that several of our projects, ranging from Belgrave Court, to the Venture Building, to Banff & Buchan College and the new building for Arup are all starting to follow this integrated pattern, hopefully to the benefit of our clients.

**BANFF & BUCHAN COLLEGE**

The end of February saw the official submission to the Funding Council of Banff & Buchan's Outline Business Case for comprehensively remodelling the College campus. This brought to an end the first phase of the major exercise of translating operational needs into a building strategy and a vision for the future. Now follows an anxious wait to see whether grant funding will be made available for what could be **haa design's** most challenging project.



**SUBSEA CENTRE OF EXCELLENCE**

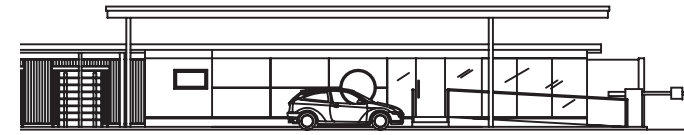
**haa design** are working on a feasibility study to understand the training requirements of the emerging sector of subsea engineering, to see if its training needs can be outsourced and combined with the existing facilities at Banff & Buchan College. The exercise requires developing both an architectural proposal and also a business development plan for incorporation into Banff & Buchan's wider campus plan.

**GHI OFFICE**

On 8th February GHI moved into their newly completed Belgrave Court. This date saw the completion of an integrated strategic planning, architecture and interior design exercise and the development of a successful working relationship with GHI who have undertaken numerous projects with **haa design**. For GHI their own HQ building is the mark of outstanding progress over the brief 14 years in which they have been in existence.

**THALES OPTRONICS**

**haa design** were invited by THALES to look at the issue of company image on arrival at their Glasgow site. Starting with ideas about graphics and exhibition material the conversation moved rapidly onto the logistics of arrival and **haa design** are now modifying their guardhouse and reorganising their visitors parking.



**ANNICKBANK, IRVINE**

**haa design** together with developer Speyroc have won a limited competition for the masterplanning and development of a large commercial development on the edge of Irvine. **haa design** produced a masterplan, building layouts and strategies which helped convince Irvine Bay Urban Regeneration Company to select Speyroc above several other potential developers.



ANNICKBANK IRVINE



GHI - BELGRAVE COURT

**INSIDE THIS ISSUE**

- GHI - BELGRAVE COURT
- ARUP SCOTLAND
- ST ALOYSIUS COLLEGE
- SOUTH LANARKSHIRE COUNCIL
- TURNER GROUP
- KPMG
- BANFF & BUCHAN COLLEGE
- J.I.S.C.
- GLASGOW UNIVERSITY
- THALES OPTRONICS
- SUBSEA CENTRE OF EXCELLENCE
- LETHINGTON ROAD
- LEARNING/ TEACHING WORK GROUP
- ANNICKBANK IRVINE

architecture  
interiors  
consultancy

haadesign

news



David Walker Care Centre



St Aloysius College



Venture Building

### DAVID WALKER CARE CENTRE - SOUTH LANARKSHIRE COUNCIL

In December of 2006 **haa design** won a term contract to undertake interior design services for South Lanarkshire Council. Since then they have worked on various small and larger projects. The challenge just now is a new build Care Home together with Smith Findlay Architects. Interior design covers all spaces from bedrooms, to hair salons, to special restaurants and social areas, where a blend between practicality and style has had to be honed with infinite care. It is proving satisfying to have a client who takes the task of interior design so seriously and who insists on only the highest of standards.

### GLASGOW UNIVERSITY

**haa design** are working with the University to refurbish one of their lecture theatres and to see to what extent it can be equipped to meet the newly emerging demand for blended learning, making use of new technology and new types of furniture.

### ST ALOYSIUS COLLEGE

**haa design** have been working with St Aloysius College to develop an overall campus plan and to test the capacity and usage of various sites within the College's ownership. The current project puts into effect the first of these steps, tidying up a large playground and equipping it for different activities over time.

### KPMG

**haa design** have undertaken a second project for KPMG within Edinburgh's Saltire Court, this time involving more conventional space planning and interior design. Not a large project but involving various associated moves, we are pleased to report that everything was completed on time and well within budget

### VENTURE BUILDING, WEST OF SCOTLAND SCIENCE PARK

**haa design** has commenced work on a new office development for Speyroc. This 31,000ft2 project builds on **haa design's** sustainability experience, and is on course to achieve an Excellent BREEAM rating. The design is also investigating innovative claddings, including a planted 'living' wall and cladding tiles made from recycled tyres and plastics.

### ARUP SCOTLAND

Architectural projects move slowly and especially so if requiring consents to modify listed buildings, but, this said, the Arup project is making steady progress with statutory permissions secured and a full bill of works out to tender. All well and we should be on site in the summer. Then begins interior design and the next stage of proving that the building works.



ARUP Scotland



### JISC (Joint Information Systems Committee)

Hugh Anderson is working with Les Watson of Royal Holloway College and Ted Smith of Cardiff University to advise JISC on its research programme into Technology Enriched Learning Environments (TELE). Besides calling for a supersized ability to remember and invent acronyms, the exercise draws on **haa design's** slightly better understanding of changing space requirements in Further and Higher Education.

### LEARNING/ TEACHING WORKING GROUP

**haa design** have been invited by Glasgow University to join them on a working group to understand new trends in learning and teaching and the extent to which they can and should be adopted by the University. The group consists of members of the estates team and teaching staff and aims to bring together different ranges of experience, thereby developing the buy-in of users as the University embarks upon a period of major change.

### TURNER GROUP

**haa design** won a small design exercise to come up with a new front image for Turner's Glasgow offices. This is now being implemented together with associated refurbishment.



Lethington Road

### LETHINGTON ROAD

Back in the infant days of **haa design**, Hugh Anderson refurbished and modified a house for friends to incorporate full disabled access without it being obvious that any special provisions had been allowed for. With the family growing up the brief is similar but also casts an eye to a time when children might start to leave home (a time that more than one of us might dream of!).



GHI - BELGRAVE COURT

### QUICKFIRE NEWS

Together with Speyroc **haa design** have won the competition for a new business park at Annickbank in Irvine. This brings together various strategies that **haa design** have been developing with Speyroc.

The speed with which sustainability has managed to establish itself on both the building industry & political agendas has been surprising. The difficulty now is one of showing that you can bring something genuinely new to the debate and not be seen as just jumping on the bandwagon. At **haa design** the principles of sustainability have been embedded in our approach to the issue of change, namely that buildings should be simple and robust and that change should be able to take place without the environmentally expensive need to constantly start anew.